



Columbus Gold
CORPORATION

Nevada's Distinguished Mine Finders



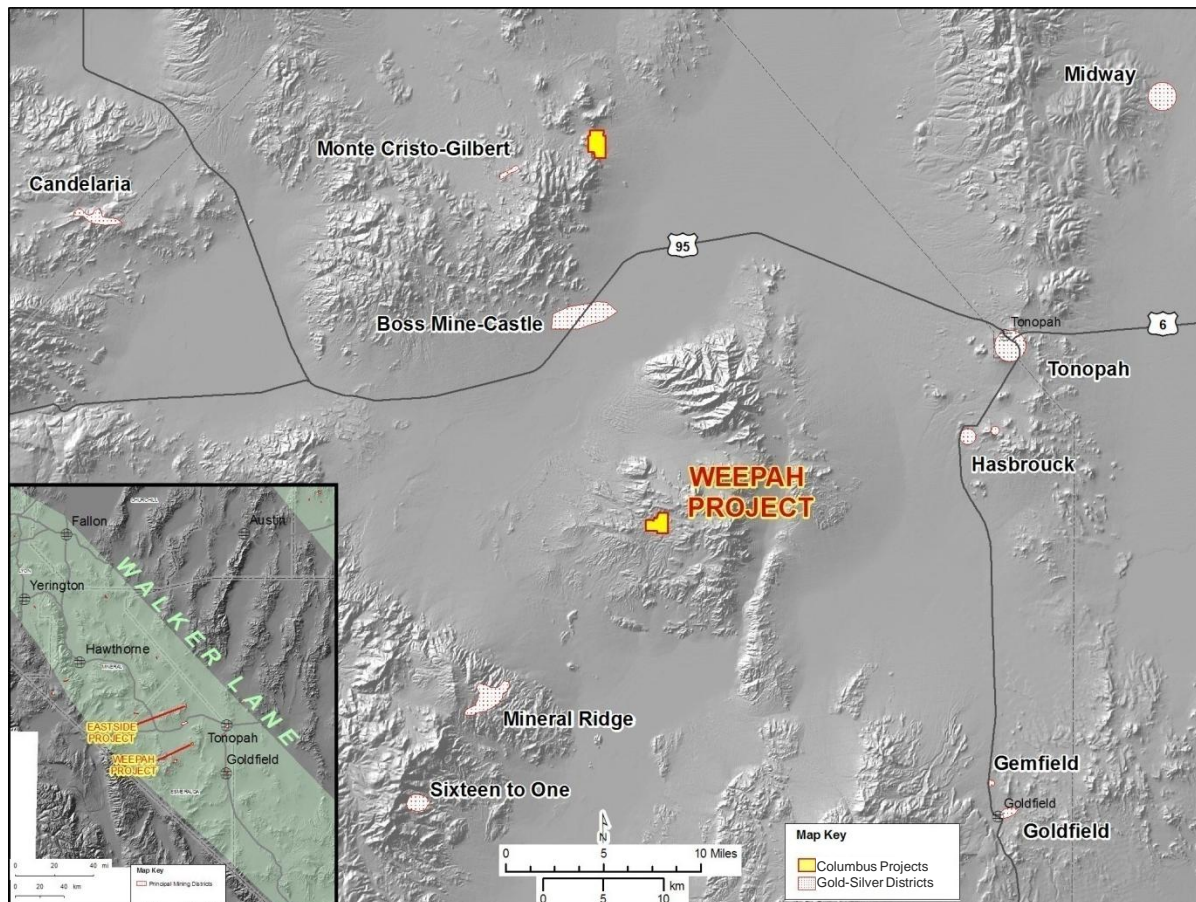
2011 DRILLING PLANS

CGT: TSX-V
CBGDF: OTCBB

Andy Wallace is a Certified Professional Geologist (CPG) with the American Institute of Professional Geologists and is the Qualified Person under NI 43-101 who has reviewed and approved the technical contents of this news release. Mr. Wallace is a VP of Columbus Gold's wholly-owned US operating subsidiary, Columbus Gold (U.S.) Corporation and is the principal of Cordilleran Exploration Company ("Cordex"), which is conducting exploration and project generation activities for Columbus Gold on an exclusive basis. The reader should be cautioned however that a qualified person has not done sufficient work to classify the historical estimates contained in this presentation as current mineral resources. Columbus Gold is not treating the historical estimates as current mineral resources and the historical estimates should not be relied upon.


COLUMBUS GOLD - PLANNED DRILLING - 2011

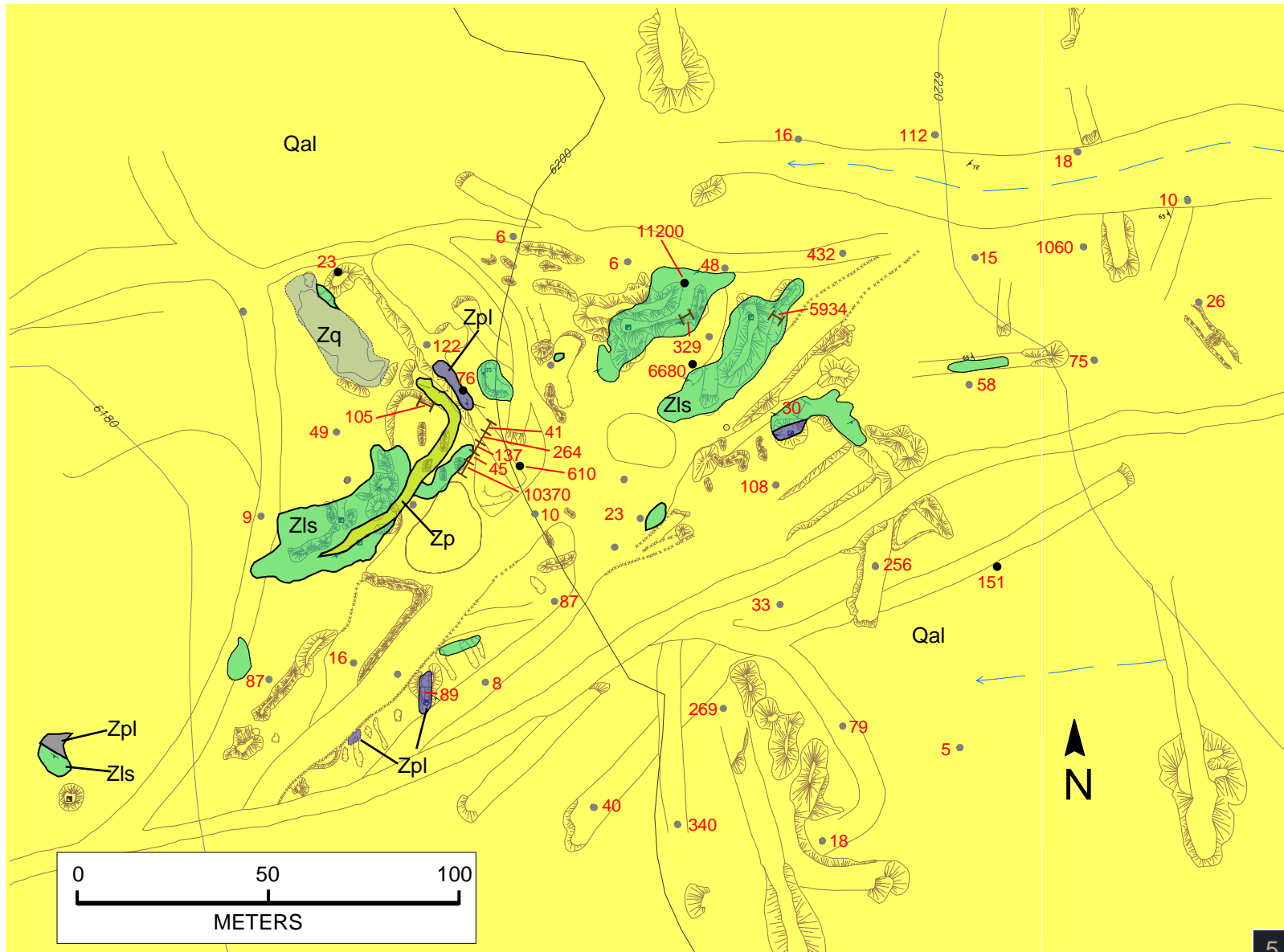


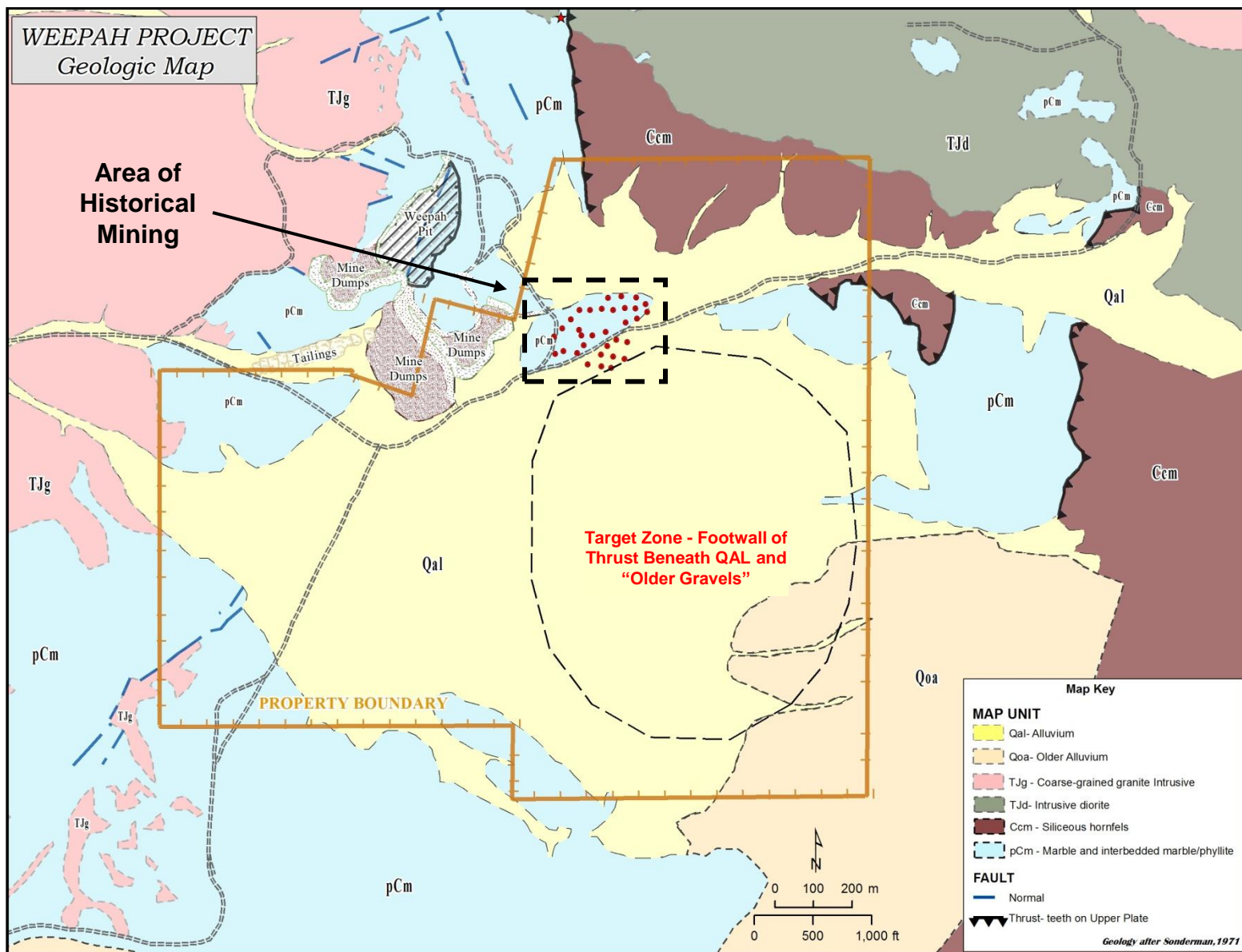


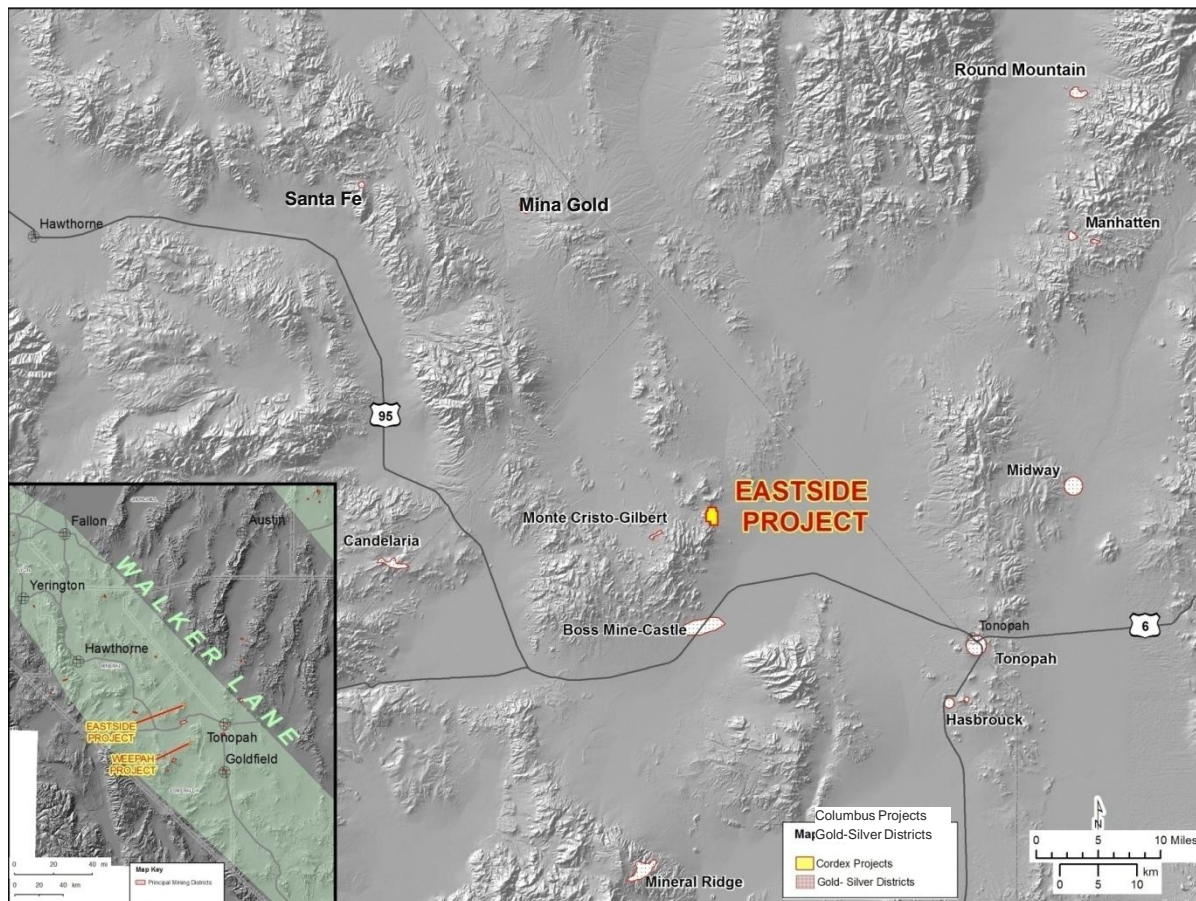
- Property extends from historical mining, where the most recent production was from an open pit.
- New sampling of sparse outcrop through thin gravel cover east and southeast of the historical camp yielded values up to 10.29 g/t (0.30 opt) gold over 3.6 m (12 ft), and 17.14 g/t (0.50 opt) gold over 1.8 m (6 ft).
- The favorable geology extends to the south for 1,200-1,500 m (4000-5,000 ft) under very thin gravel cover.
- Drilling is scheduled to commence in January 2011 with a 20 hole 10,000 feet (3,050m) program.

Note: Where assay values are indicated as "up to", the range is from "nil" up to the value indicated.

- Quaternary alluvium Qal
- Precambrian phyllite & marble Zpl
- Precambrian limestone & marble Zls
- Precambrian phyllite Zp
- Precambrian quartzite Zq
- Rock chip sample
- Drill hole cuttings pile sample
- Au ppb 89
- Historical workings 
- (1000 ppb=1 g/t)

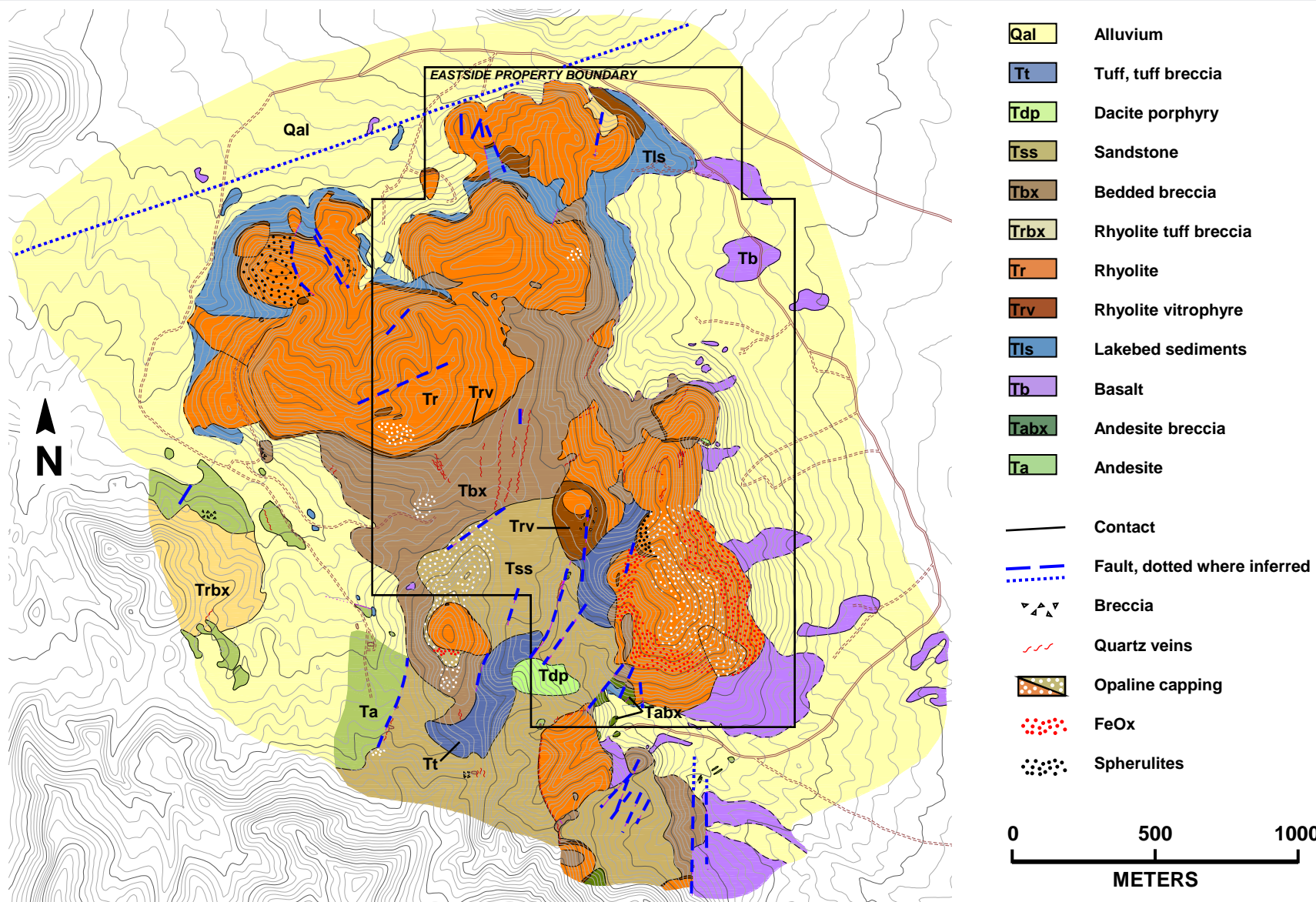


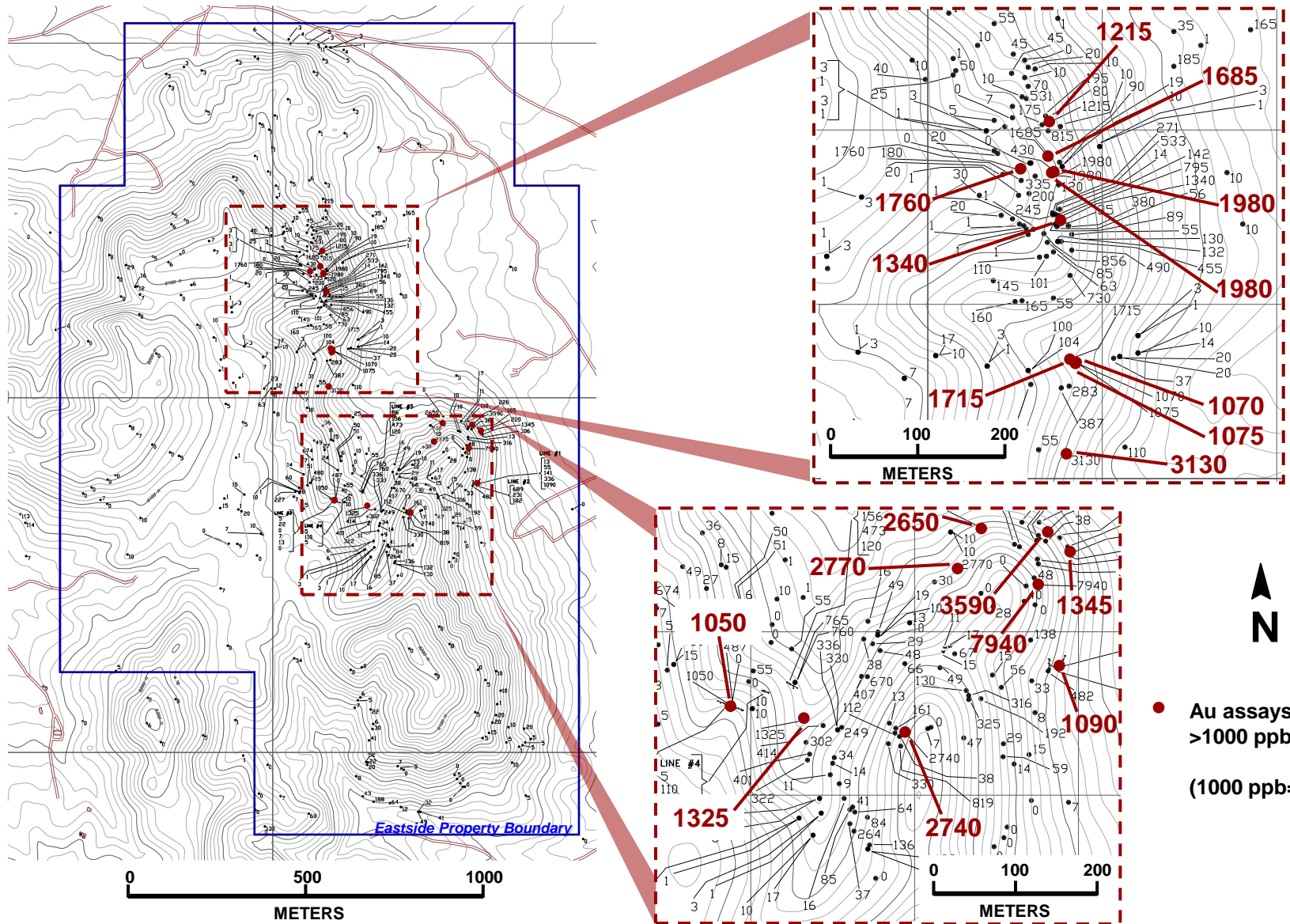


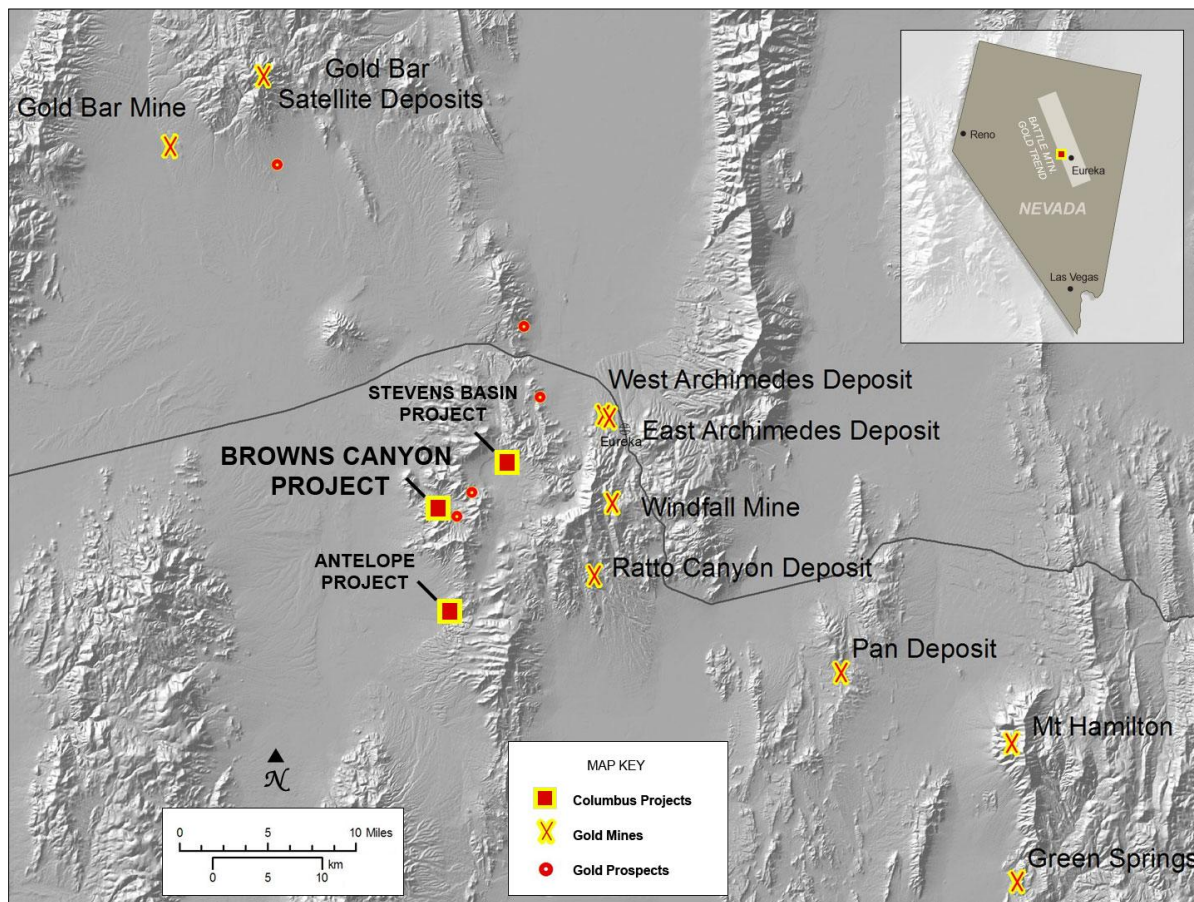


- Outcrop sampling (530 samples) of a zone of silicified breccia over 900 m (3,000 ft) of strike length yielded gold values ranging from trace values up to 7.95 g/t (0.23 opt).
- Most of the samples exceeded 0.15 g/t (0.004 opt) with several contiguous areas running from 0.8 to 3.5 g/t (0.02 to 0.10 opt).
- Only three historic drill holes on the property, but none tested the mineralization identified in the recent sampling.
- Drilling is planned to commence in Spring 2011 with a 20 hole 20,000 feet (3,050m) program

Note: Where assay values are indicated as "up to", the range is from "nil" up to the value indicated.

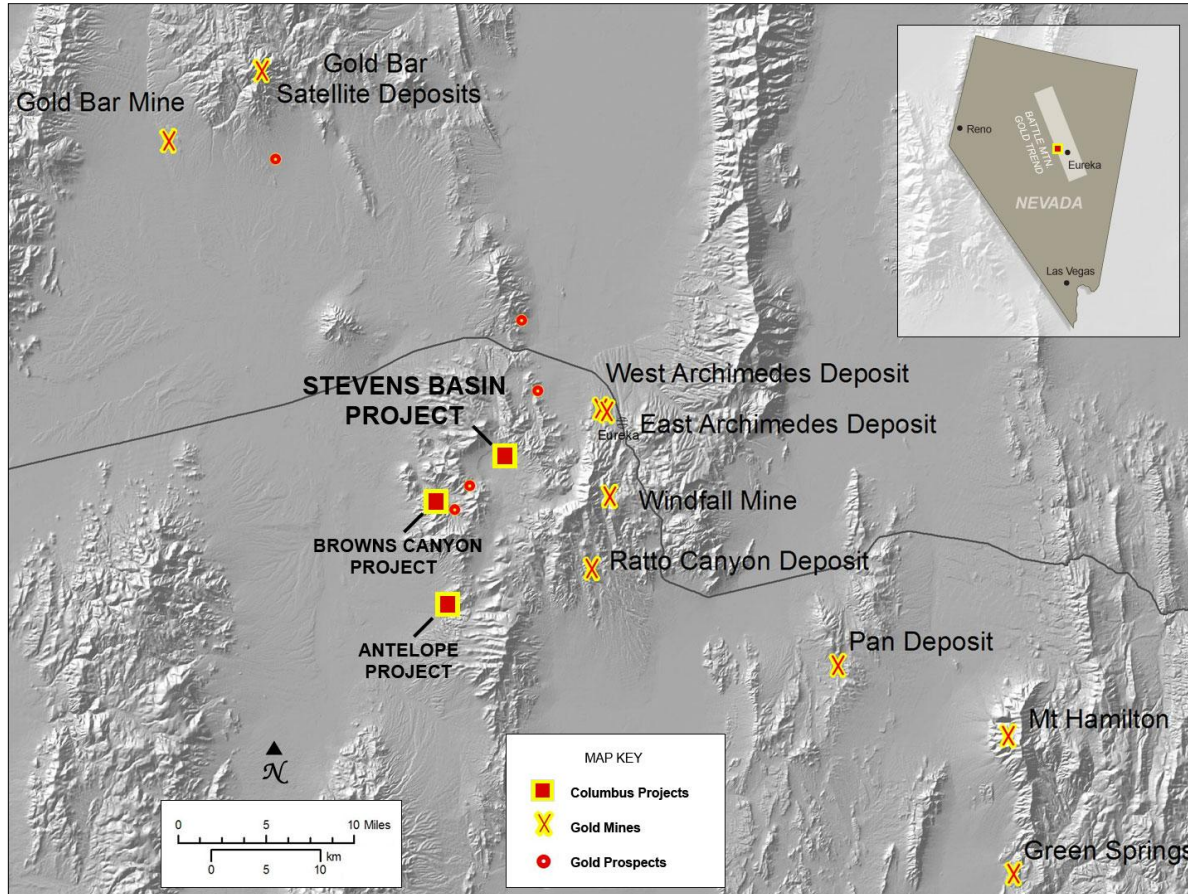




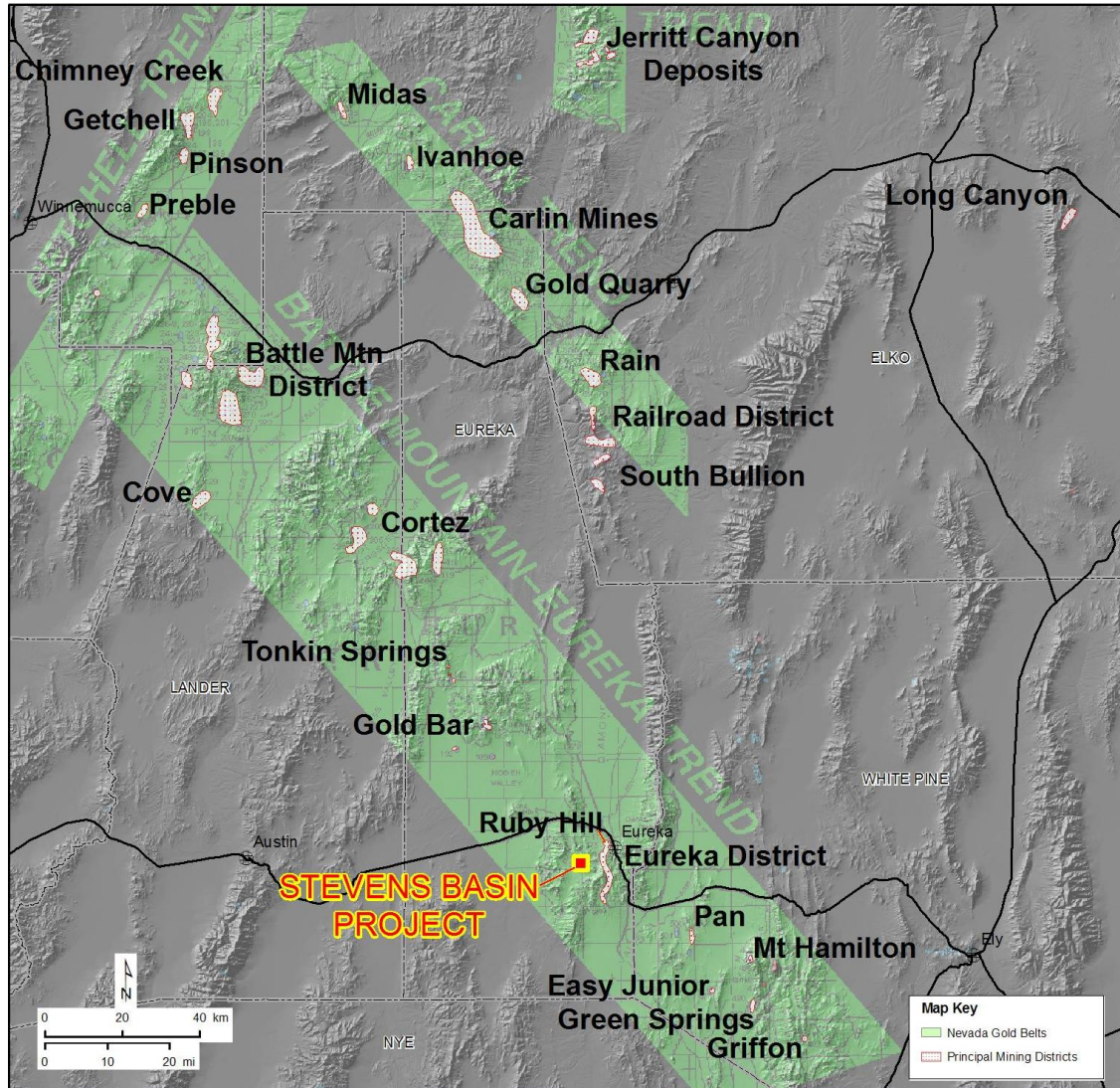


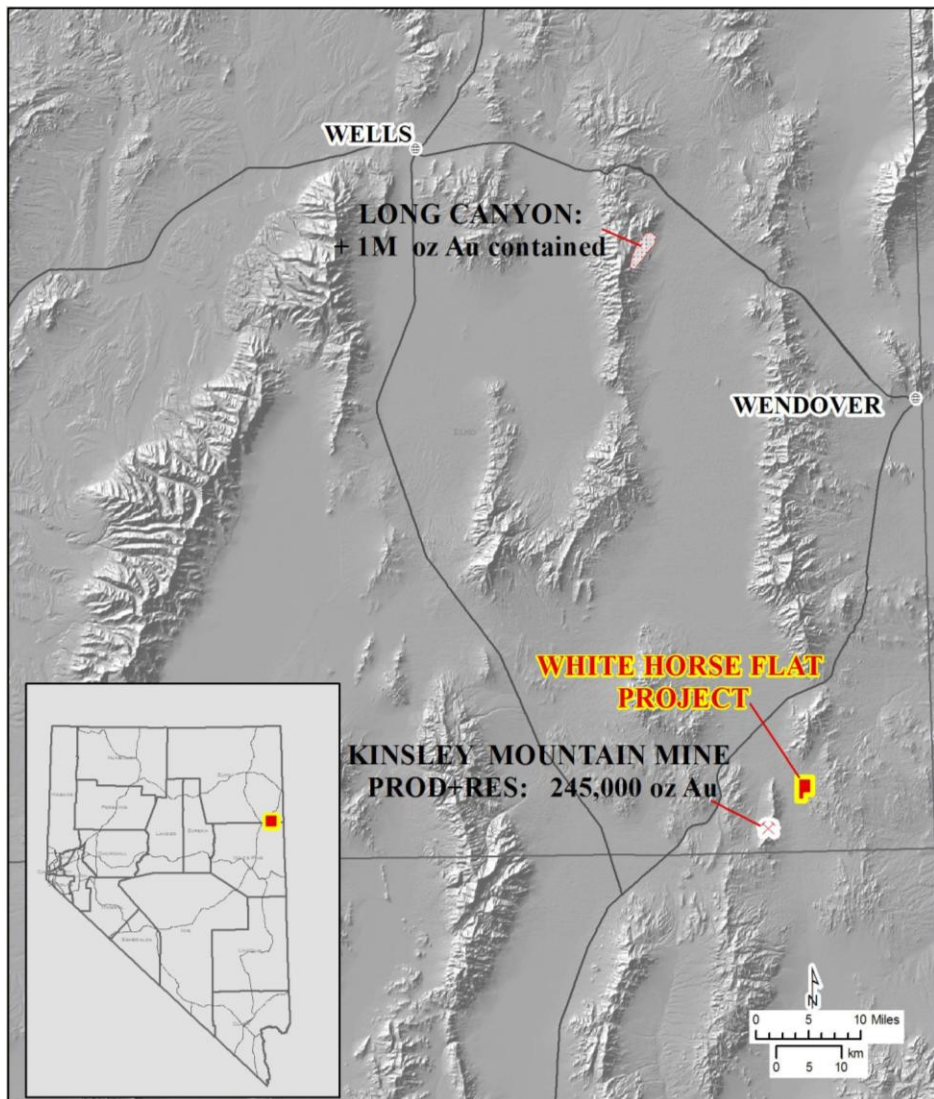
- Recent sampling yielded gold values up to 3 g/t along a zone of silicification, sparsely exposed through cover, with a strike length of 2,000 meters.
- The mineralization is Carlin-style, hosted in Devonian and Mississippian limestones, shales and siltstones.
- Seven widely-spaced historic drill holes are present, with the best intercept being 9 meters of 0.82 g/t gold. Much of the strike length of the mineralized zone is untested by drilling.
- Drilling is planned to commence in Summer 2011 with a 15 hole 7,500 feet (2,300m) program

Note: Where assay values are indicated as "up to", the range is from "nil" up to the value indicated.



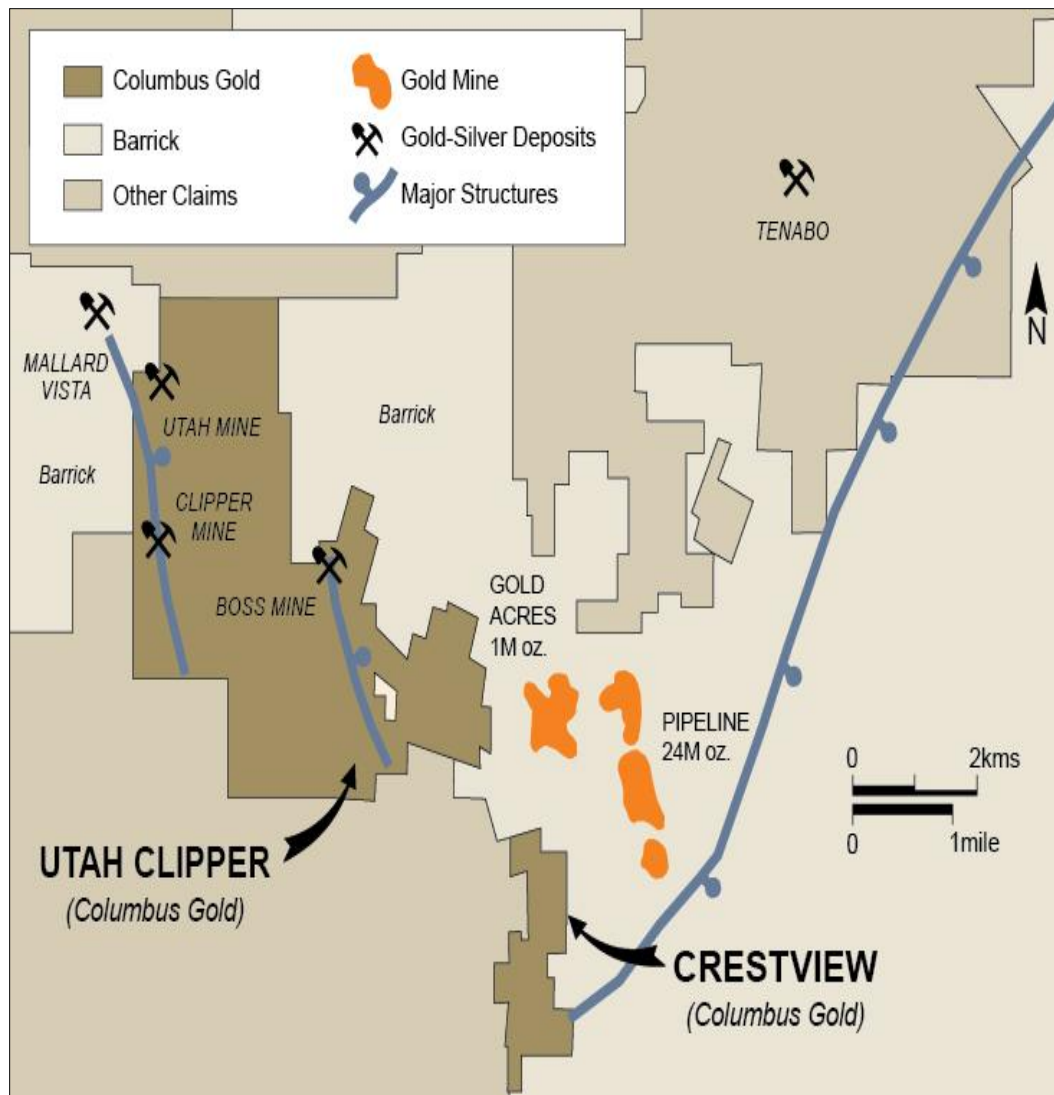
- A 9 by 30 m (30 by 100 ft) jasperoid assaying 1-2 g/t gold in 12 samples passes under large area of shallow gravel cover.
- Sampling in the covered area yielded a gold anomaly (100 ppb to 2505 ppb; numerous exceeding 500 ppb) measuring 760 m (2,500 ft) by 30-90 m (100-300 ft); zone still open in several areas.
- The gold anomaly coincides with significant anomalies of arsenic, antimony and mercury.
- JV partner Navaho Gold planning a phase I drill program commencing in May 2011. 40 holes have been permitted and phase I will include approximately 6,650 ft (2,000m) followed by a phase II program of another 6,650 ft. subject to phase I results.





- Silicification forms a belt with common lieegang banding and widespread anomalous gold (from 30 to 1,817 ppb), associated with anomalous arsenic, antimony, and mercury.
- Sampling delineated an area approx. 165 m long and 60 m wide (550 ft long and 200 ft wide) yielding assays from 0.32 to 1.82 g/t gold. The zone is covered with alluvium on its north and east sides.
- The mineralization is Carlin-type and the property is positioned over drill targets with no previous drilling.
- JV partner Navaho Gold planning up to 6,600 ft (2,000m) of drilling in 10-12 RC holes.

- Utah Clipper & Crestview directly adjacent to Pipeline-Gold Acres pits.
- Pipeline production and reserves exceed 25M oz. gold.
- Historic production from the Utah, Clipper & Boss mines.
- Limited historical exploration.
- JV partner Navaho Gold planning up to 1,600 ft of drilling.



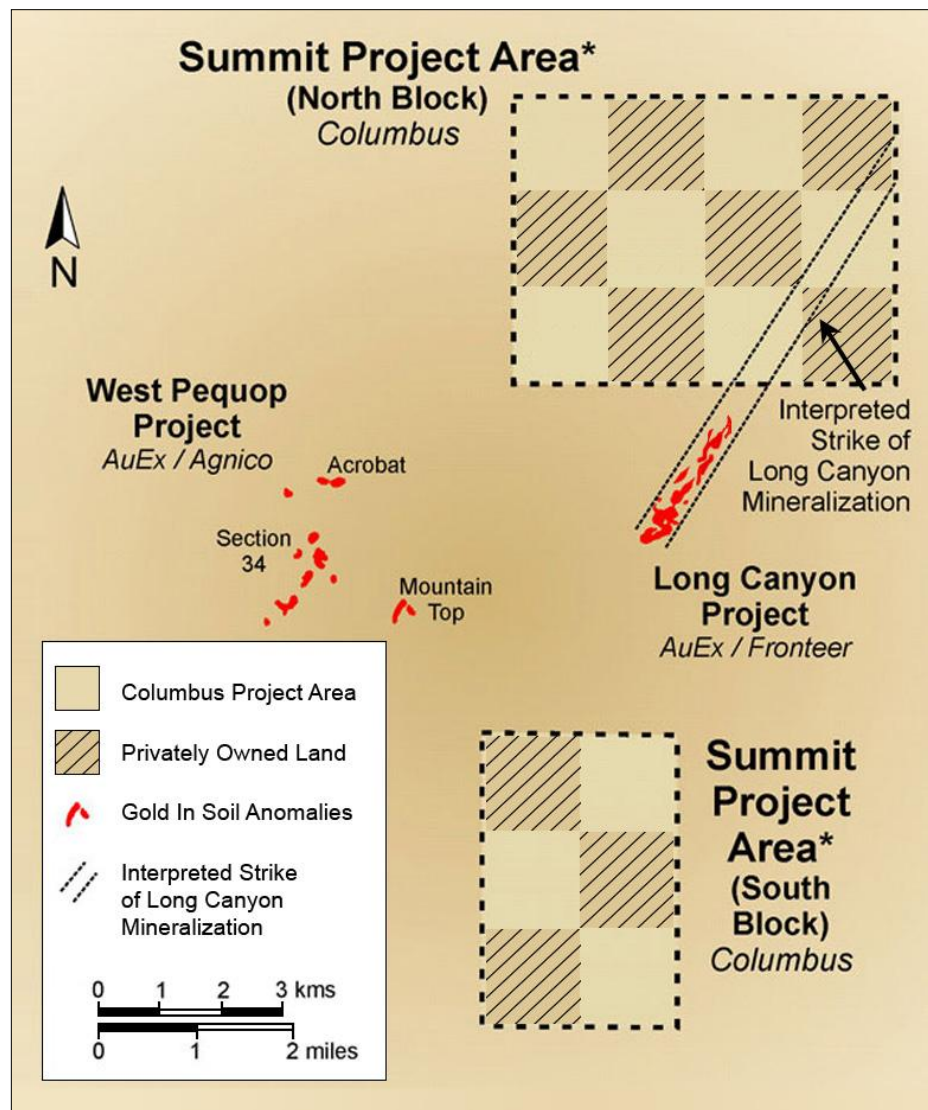
- Walker Lane Gold Trend.
- Past production of 10,000 tons grading 1.9 g/t Au in the 1930's.
- Drilling in the 1970's and 1980's by Battle Mtn Gold included a drill intercept of 16 g/t Au along 29.5 m, which included 47 g/t Au along 9.1 m.
- Drilling in early 2006 by Columbus consisted of 2,345 metres in fifteen shallow holes; important intercepts included 7.6 m of 4.2 g/t Au and 9.1 m averaging 13.8g/t Au, including 3.1 m of 28.94 g/t Au.
- Open to the north-west and at depth.
- JV partner Roscan Mineral Corp. planning up to 3,000 ft of drilling in 6 holes in early 2011.



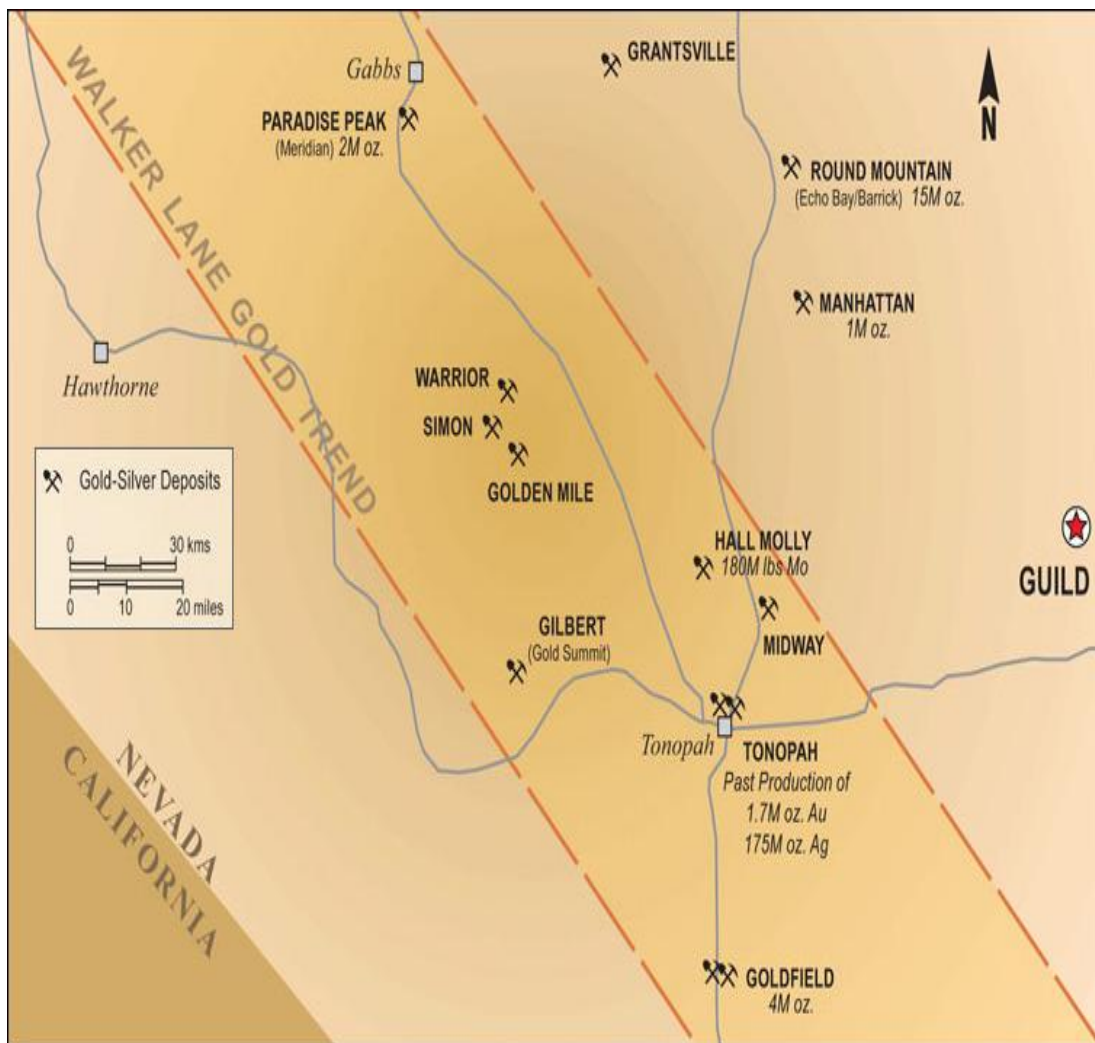
- Along strike of Long Canyon and West Pequop Carlin type gold discoveries of Fronteer-AuEx.
- Agnico-Eagle is earning an initial 51% interest by spending US\$3 million.
- Agnico-Eagle plans to drill in 2011.



AuEx' Long Canyon Discovery



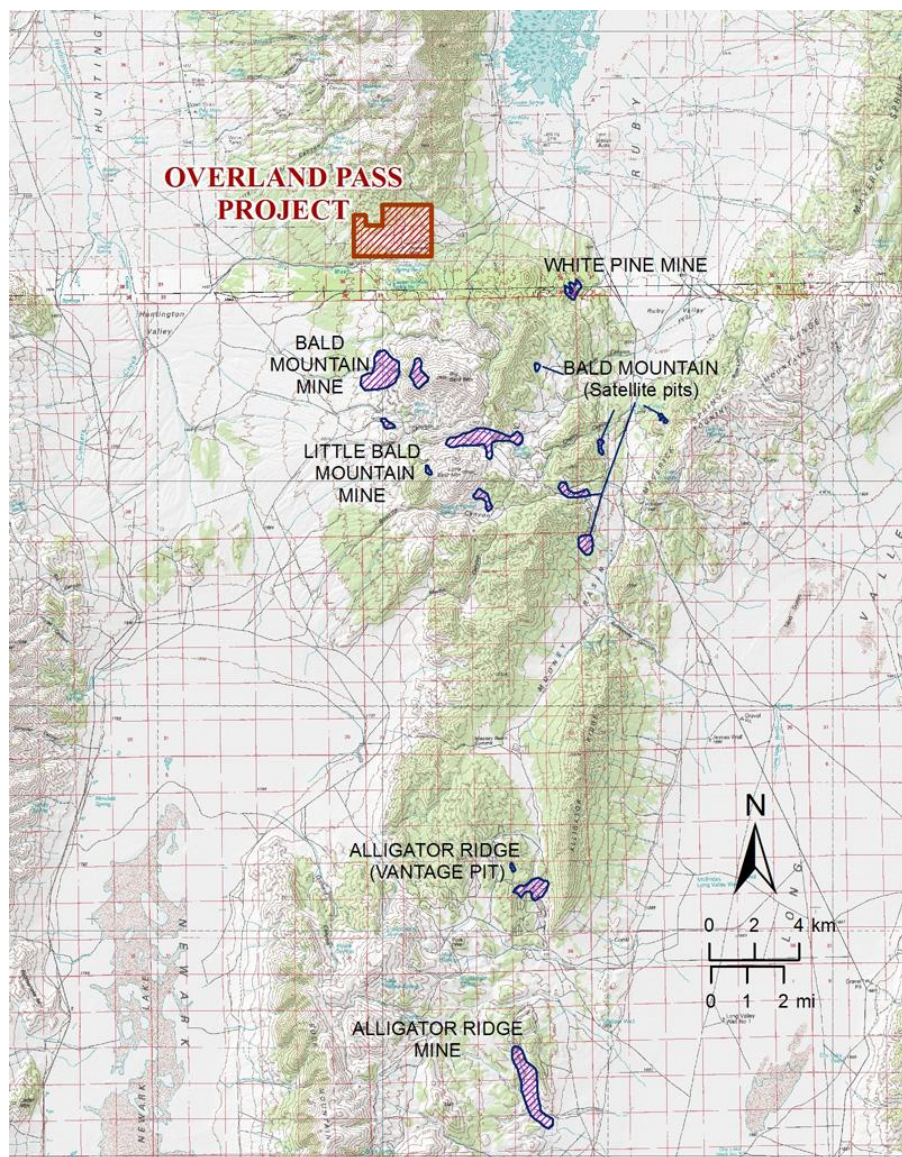
* The Summit Project is in an area of Nevada known as the "checkerboard" where every other square mile is privately held. Columbus Gold's claims cover the intervening ground between the private parcels of land.



- Target is an ore-controlling structure extending 1.6 km (1 mile) under shallow post-ore cover between the main Guild gold showing and a jasperoid in an area to the south, where it crosses the inferred position of the Roberts Mountain Thrust Fault.
- The structure should cut the Mississippian Webb Formation in the south end of the block (host for the Rain, Dee, and various other Nevada disseminated gold mines).
- Important structures under cover have been identified from gravity and CSAMT surveys.
- JV partner Sniper Resources has commenced a drilling program planned for 20,000 ft (6,100m) in up to 24 holes.



- The property covers altered Roberts Mountain Formation exposed in the windows beneath the Roberts Mountain Thrust Fault. Gold mines in similar geological settings yielded the best gold grades and tonnages in the history of Nevada gold production.
- Sampling in hydrothermally altered areas returned gold (to 364 ppb), arsenic (to 1,500 ppm), antimony (to 100 ppm) and mercury (to several ppm). These elements in limy sedimentary rocks and altered Tertiary dikes are diagnostic of Carlin-type gold mineralization.
- A 6,000 ft long arsenic anomaly with samples ranging from 75 to 1,500 ppm arsenic has been identified with gold values from 20 to 364 ppb occurring intermittently along the anomalous trend. Drilling is planned for the Fall of 2011.



- Located just north of Barrick Gold's Bald Mountain Gold Mine, on the southern extension of the Carlin Trend.
- The geologic setting is similar to Alligator Ridge and Rain which are sediment hosted gold deposits.
- Sampling at Overland Pass has yielded gold from silicified zones and breccia in the Pilot Shale and Joana Limestone. The favorable Pilot/Joana stratigraphic sequence is present for approximately 3 km (2 miles) of strike length on the claim block. Gold values range from anomalous to **15.5 g/t Au (0.45 opt)** in surface sampling, with nine samples exceeding 3 g/t (0.10 opt) Au range.
- JV partner Sniper Resources has commenced a drilling program planned for 20,000 ft (6,100m) in up to 24 holes.



Columbus Gold
CORPORATION

1 888 818 1364

www.ColumbusGoldCorp.com
